

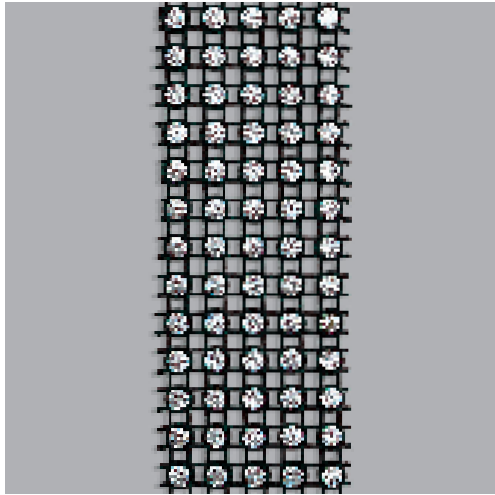


# PLASTIC TRIMMINGS · BASIC BANDINGS

## ARTICLE EXPLANATION

**50 004**

**02**



<b>R</b>	001-024 (010, 012, 022)	001-006 (081, 082)
<b>SS</b>	pp 24	
<b>M</b>	10 M	<b>100%</b>

<b>50 004</b>	<b>R</b>	<b>SS</b>	<b>M</b>	<b>02</b>	<b>100%</b>
Article Number	Number of Rows This article is available from 1 to 24 rows in <b>012</b> Black, <b>022</b> White or <b>010</b> Transparent casings and from 1 to 6 rows in <b>081</b> Gold or <b>082</b> Silver casings.	Size of Stone	Minimum order quantity in Meters (M)	This product is shown on flag number 02	Documentation size in %

## ORDERING EXAMPLE & PRODUCT VARIETY EXPLANATION

<b>50 004</b>	<b>005</b>	<b>012</b>	<b>012</b>	<b>001</b>
Article Number	Number of Rows	Color of Thread / net-edge	Color of Casing	Color of Stone
		<b>012</b> Black Thread <b>022</b> White Thread <b>081</b> Gold Thread <b>082</b> Silver Thread  <b>112</b> Black net-edge on 1 side <b>212</b> Black net-edge on 2 sides <b>122</b> White net-edge on 1 side <b>222</b> White net-edge on 2 sides	<b>012</b> Black <b>022</b> White <b>010</b> Transparent <b>081</b> Gold <b>082</b> Silver	The available stone colors are specified on the following pages.

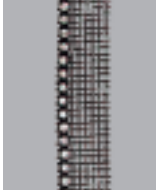
PLASTIC TRIMMINGS

---

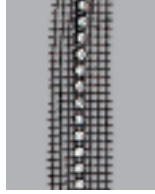
**COLOR OF THREAD / NET-EDGE**

---

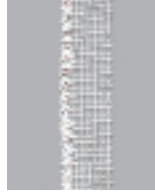
The Basic Bandings thread can be **012** Black, **022** White, **081** Gold, **082** Silver.  
 The articles 50 000 – 50 005 are available with a net-edge. The ordering numbers are:



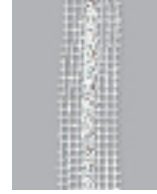
**112**  
Black net-edge  
on 1 side



**212**  
Black net-edge  
on 2 sides



**122**  
White net-edge  
on 1 side



**222**  
White net-edge  
on 2 sides

---

**COLOR OF CASING**

---

The Basic Bandings are available in 5 different Casing Colors.  
 The ordering numbers are:



**012**  
Black



**022**  
White



**010**  
Transparent



**081**  
Gold



**082**  
Silver

The 5 possible combinations for the Thread Color and Casing Color are found in the Matrix beside the visuals.

---

**COLOR OF STONE**

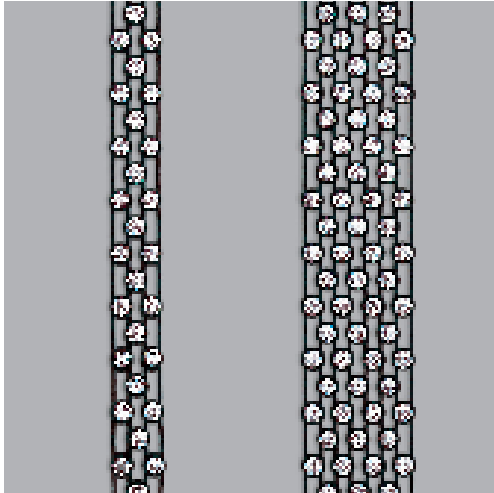
---

The Basic Bandings are available in different stone colors.  
 The list of colors can be found in the Matrix beside the visuals.

# PLASTIC TRIMMINGS · BASIC BANDINGS

50 000

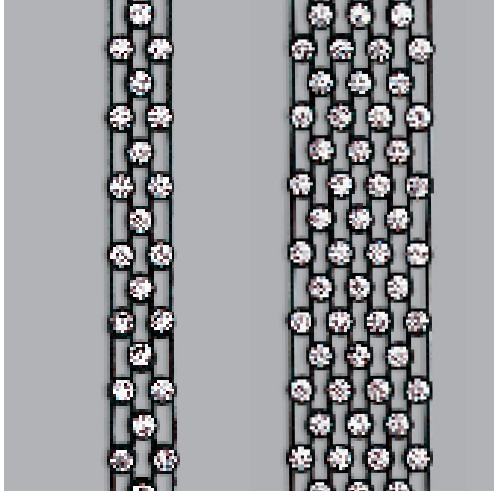
02



R\* 003-055 (010, 012, 022) 003-011 (081, 082)  
 SS pp 19  
 M 10 M 100%

50 001

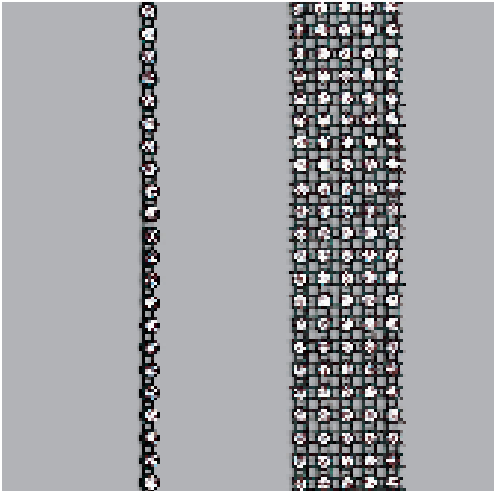
02



R\* 003-047 (010, 012, 022) 003-011 (081, 082)  
 SS pp 25  
 M 10 M 100%

50 002

02



R 001-040 (010, 012, 022) 001-010 (081, 082)  
 SS pp 12  
 M 10 M 100%

50 000 50 001 50 002	COMBINATIONS OF THREAD / CASING	012 Black / 012 Black	022 White / 022 White	022 White / 010 Transparent	081 Gold / 081 Gold	082 Silver / 082 Silver	NET-EDGES	112 / 212 Black	122 / 222 White
----------------------------	------------------------------------	-----------------------	-----------------------	-----------------------------	---------------------	-------------------------	-----------	-----------------	-----------------

COLOR OF STONE										
CLASSIC COLORS										
	Crystal (001)	■	■	■	■	■	■	■	■	■
	Crystal AB (001AB)	■	■	■	■	■	■	■	■	■
	Jet (280)	■	■	■	■	■	■	■	■	■
	Aquamarine (202)	■	■	■	■	■	■	■	■	■
	Black Diamond (215)	■	■	■	■	■	■	■	■	■
	Emerald (205)	■	■	■	■	■	■	■	■	■
	Fuchsia (502)	■	■	■	■	■	■	■	■	■
	Jonquil (213)	■	■	■	■	■	■	■	■	■
	Light Sapphire (211)	■	■	■	■	■	■	■	■	■
	Light Siam (227)	■	■	■	■	■	■	■	■	■
	Peridot (214)	■	■	■	■	■	■	■	■	■
	Sapphire (206)	■	■	■	■	■	■	■	■	■
	Topaz (203)	■	■	■	■	■	■	■	■	■
	Light Multi (908)	■	■	■	■	■	■	■	■	■
	Rainbow Multi (909)	■	■	■	■	■	■	■	■	■

PLASTIC TRIMMINGS

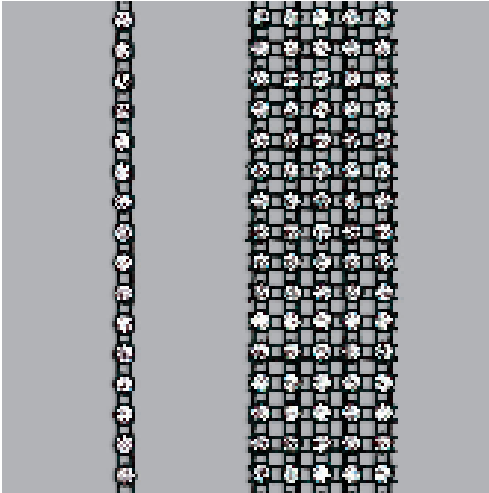
The Basic Bandings 50 000 – 50 005 in Black, White or Transparent Casing are available with a net-edge on one or both sides. The net-edge can be Black or White. For ordering information, please see page 129-130.

\* This article is only available in uneven rows!

# PLASTIC TRIMMINGS · BASIC BANDINGS

50 003

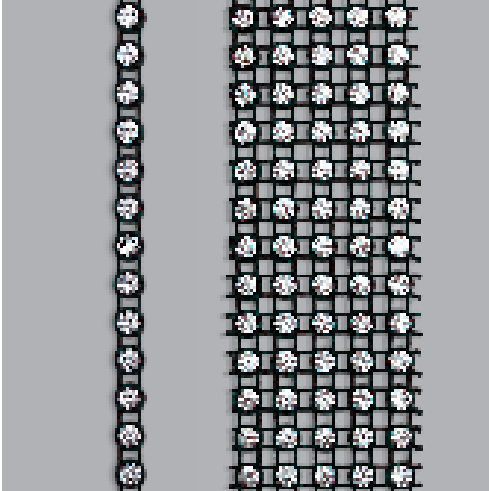
02



R 001-030 (010, 012, 022) 001-010 (081, 082)  
 SS pp 18  
 M 10 M 100%

50 004

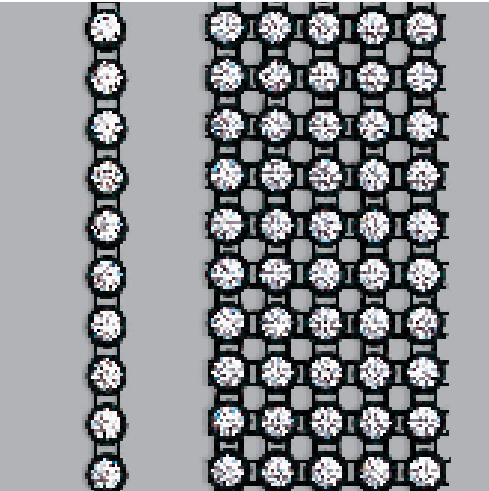
02



R 001-024 (010, 012, 022) 001-010 (081, 082)  
 SS pp 24  
 M 10 M 100%

50 005

02



R 001-018 (010, 012, 022) 001-006 (081, 082)  
 SS ss 18  
 M 10 M 100%

50 003 50 004 50 005	COMBINATIONS OF THREAD / CASING	012 Black / 012 Black	022 White / 022 White	022 White / 010 Transparent	081 Gold / 081 Gold	082 Silver / 082 Silver	NET-EDGES	112 / 212 Black	122 / 222 White
----------------------------	------------------------------------	-----------------------	-----------------------	-----------------------------	---------------------	-------------------------	-----------	-----------------	-----------------

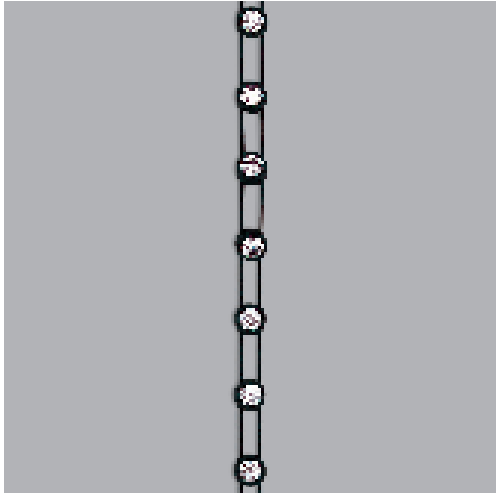
COLOR OF STONE										
CLASSIC COLORS										
	Crystal (001)	■	■	■	■	■	■	■	■	■
	Crystal AB (001AB)	■	■	■	■	■	■	■	■	■
	Jet (280)	■	■	■	■	■	■	■	■	■
	Aquamarine (202)	■	■	■	■	■	■	■	■	■
	Black Diamond (215)	■	■	■	■	■	■	■	■	■
	Emerald (205)	■	■	■	■	■	■	■	■	■
	Fuchsia (502)	■	■	■	■	■	■	■	■	■
	Jonquil (213)	■	■	■	■	■	■	■	■	■
	Light Sapphire (211)	■	■	■	■	■	■	■	■	■
	Light Siam (227)	■	■	■	■	■	■	■	■	■
	Peridot (214)	■	■	■	■	■	■	■	■	■
	Sapphire (206)	■	■	■	■	■	■	■	■	■
	Topaz (203)	■	■	■	■	■	■	■	■	■
	Light Multi (908)	■	■	■	■	■	■	■	■	■
	Rainbow Multi (909)	■	■	■	■	■	■	■	■	■

The Basic Bandings 50 000 – 50 005 in Black, White or Transparent Casing are available with a net-edge on one or both sides. The net-edge can be Black or White. For ordering information, please see page 129.

# PLASTIC TRIMMINGS · BASIC BANDINGS

50 006

02



R	001	
SS	pp 24	
M	10 M	100%



COMBINATIONS OF  
THREAD / CASING

- 012 Black / 012 Black
- 022 White / 022 White
- 022 White / 010 Transparent
- 081 Gold / 081 Gold
- 082 Silver / 082 Silver

COLOR OF STONE

CLASSIC COLORS

Color of Stone	012 Black / 012 Black	022 White / 022 White	022 White / 010 Transparent	081 Gold / 081 Gold	082 Silver / 082 Silver
Crystal (001)	■	■	■	■	■
Crystal AB (001AB)	■	■	■	■	■
Jet (280)	■	■	■	■	■
Aquamarine (202)	■	■	■	■	■
Black Diamond (215)	■	■	■	■	■
Emerald (205)	■	■	■	■	■
Fuchsia (502)	■	■	■	■	■
Jonquil (213)	■	■	■	■	■
Light Sapphire (211)	■	■	■	■	■
Light Siam (227)	■	■	■	■	■
Peridot (214)	■	■	■	■	■
Sapphire (206)	■	■	■	■	■
Topaz (203)	■	■	■	■	■
Light Multi (908)	■	■	■	■	■
Rainbow Multi (909)	■	■	■	■	■

PLASTIC TRIMMINGS

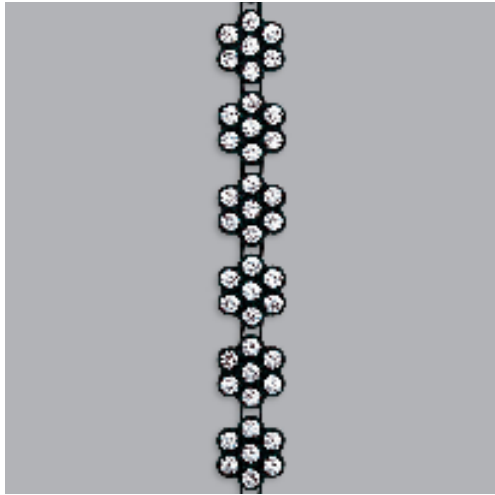


# PLASTIC TRIMMINGS · DECORATIVE BANDINGS

## ARTICLE EXPLANATION

**50 105**

**03**



<b>R</b> 001	
<b>SS</b> pp 25	
<b>M</b> 10 M	<b>90%</b>

<b>50 105</b>	<b>R</b>	<b>SS</b>	<b>M</b>	<b>03</b>	<b>90%</b>
Article Number	Number of Rows This article is available in one version. The ordering number is <b>always</b> 001!	Size of Stone	Minimum order quantity in Meters (M)	This product is shown on flag number 03	Documentation size in %

## ORDERING EXAMPLE\* & PRODUCT VARIETY EXPLANATION

<b>50 105</b>	<b>001</b>	<b>012</b>	<b>012</b>	<b>001</b>
Article Number	Number of Rows	Color of Thread	Color of Casing	Color of Stone
		<b>012</b> Black <b>022</b> White <b>081</b> Gold <b>082</b> Silver	<b>012</b> Black <b>022</b> White <b>010</b> Transparent <b>081</b> Gold <b>082</b> Silver	The available stone colors are specified on the following pages.

\* When ordering the Art. 50 500 'Color of Thread' is not applicable.

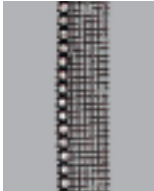
## PLASTIC TRIMMINGS · DECORATIVE BANDINGS

---

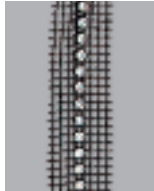
### COLOR OF THREAD / NET-EDGE

---

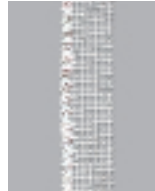
The Decorative Bandings thread can be **012** Black, **022** White, **081** Gold, **082** Silver.  
The articles 50 100, 50 101, 50 103, 50 104, 50 106, 50 109 are available with a net-edge  
and the ordering numbers are:



**112**  
Black net-edge  
on 1 side



**212**  
Black net-edge  
on 2 sides



**122**  
White net-edge  
on 1 side



**222**  
White net-edge  
on 2 sides

---

### COLOR OF CASING

---

The Basic Bandings are available in 5 different Casing Colors.  
The ordering numbers are:



**012**  
Black



**022**  
White



**010**  
Transparent



**081**  
Gold



**082**  
Silver

The 5 possible combinations for the Thread Color and Casing Color are  
found in the Matrix beside the visuals.  
It also shows which Decorative Bandings are available with a net-edge.

---

### COLOR OF STONE

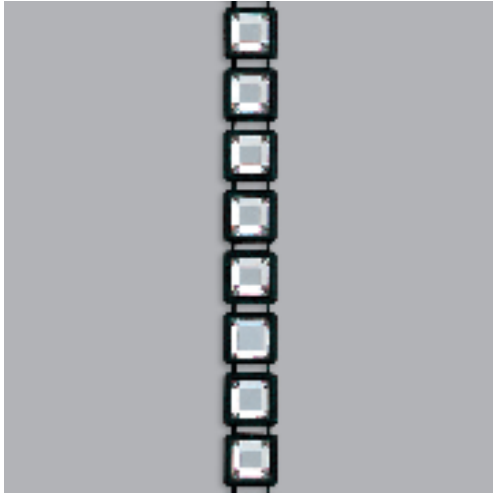
---

The Basic Bandings are available in the stone color Crystal (001).

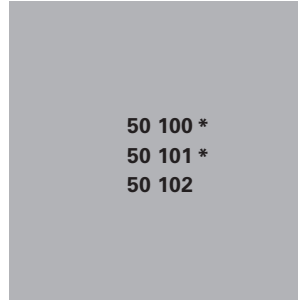
# PLASTIC TRIMMINGS · DECORATIVE BANDINGS

50 100

03



R	001	
SS	2400/2 6 mm	
M	10 M	100%



COLOR OF STONE

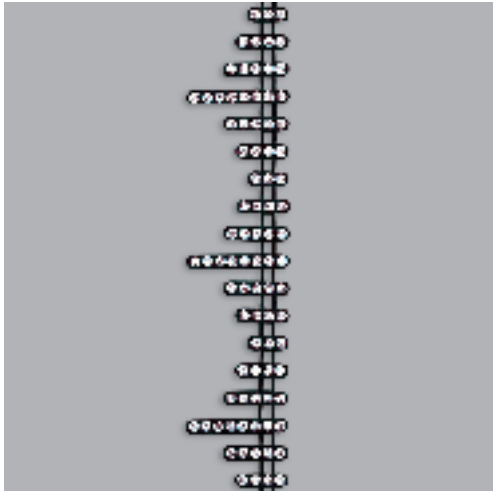
CLASSIC COLORS

Crystal (001)

COMBINATIONS OF THREAD / CASING	012 Black / 012 Black
	022 White / 022 White
	022 White / 010 Transparent
	081 Gold / 081 Gold
	082 Silver / 082 Silver
	NET-EDGES
	112 / 212 Black
	122 / 222 White

50 101

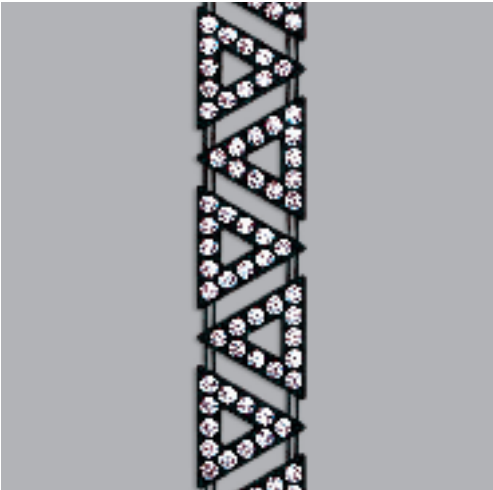
03



R	001	
SS	pp 10	
M	10 M	100%

50 102

03



R	001	
SS	pp 23	
M	10 M	100%

\* These Decorative Bandings are available with a net-edge. The ordering number for the net-edge has to be stated instead of the Color of Thread.

# PLASTIC TRIMMINGS · DECORATIVE BANDINGS

50 103

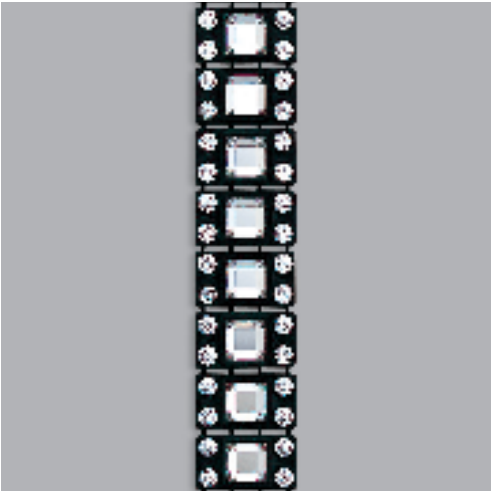
03



R	001	
SS	pp 23	4501 7x3
M	10 M	100%

50 104

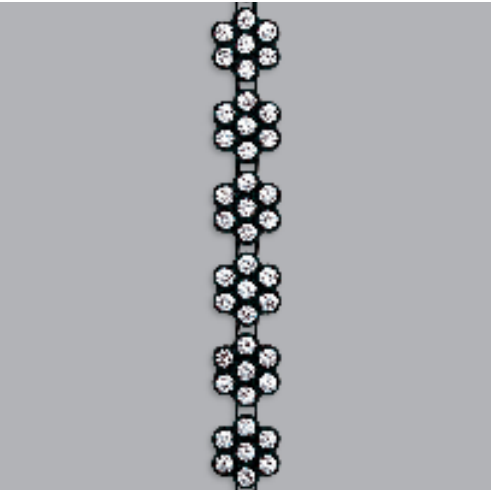
03



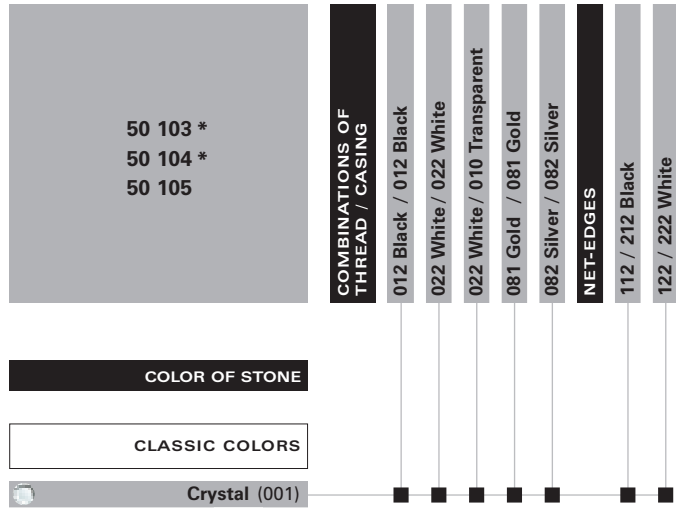
R	001	
SS	pp 23	2400/2 6 mm
M	10 M	100%

50 105

03



R	001	
SS	pp 25	
M	10 M	90%

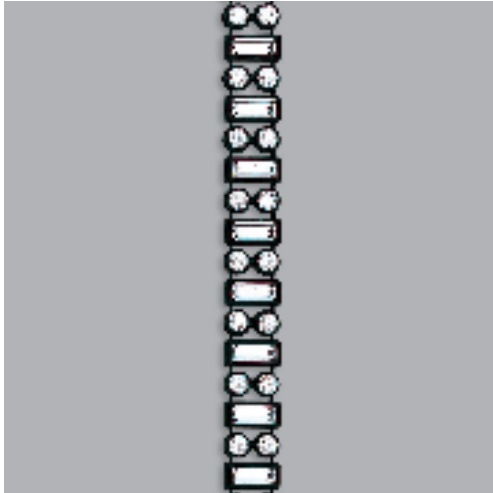


\* These Decorative Bandings are available with a net-edge. The ordering number for the net-edge has to be stated instead of the Color of Thread.

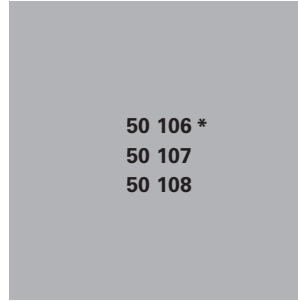
PLASTIC TRIMMINGS · DECORATIVE BANDINGS

50 106

03



<b>R</b>	001
<b>SS</b>	pp 23 4501 7x3
<b>M</b>	10 M <span style="float: right;"><b>100%</b></span>



50 106 \*  
50 107  
50 108

<b>COMBINATIONS OF THREAD / CASING</b>	012 Black / 012 Black	022 White / 022 White	022 White / 010 Transparent	081 Gold / 081 Gold	082 Silver / 082 Silver	<b>NET-EDGES</b>	112 / 212 Black	122 / 222 White
--	-----------------------	-----------------------	-----------------------------	---------------------	-------------------------	------------------	-----------------	-----------------

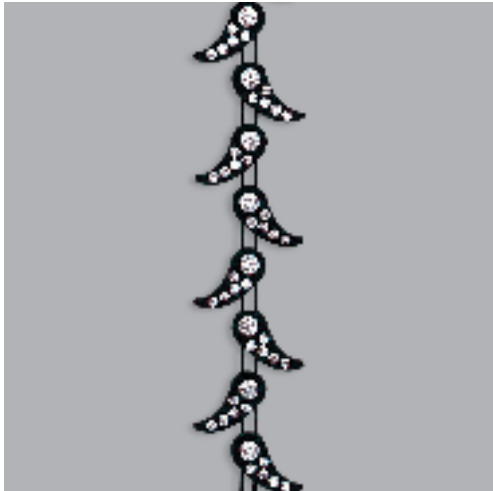
COLOR OF STONE

CLASSIC COLORS

Crystal (001)

50 107

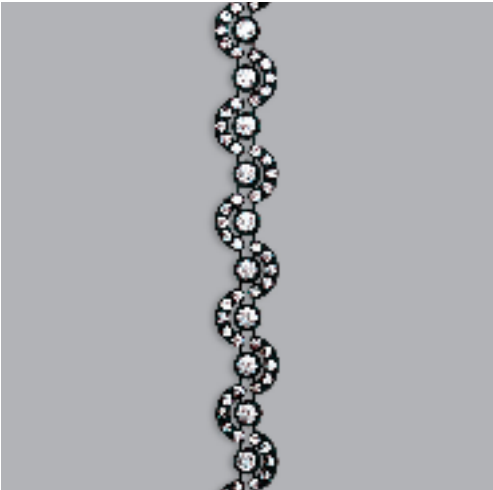
03



<b>R</b>	001
<b>SS</b>	pp 9 pp 24
<b>M</b>	10 M <span style="float: right;"><b>100%</b></span>

50 108

03



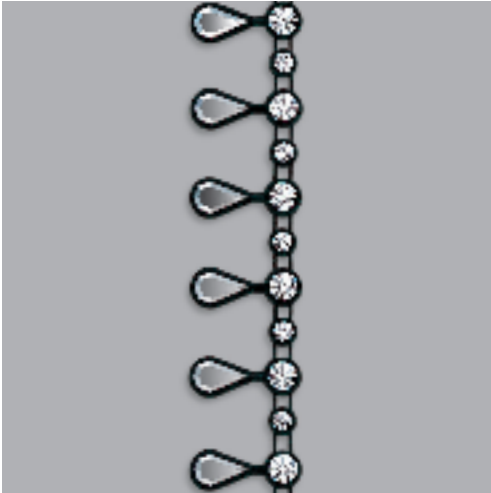
<b>R</b>	001
<b>SS</b>	pp 10 pp 24
<b>M</b>	10 M <span style="float: right;"><b>100%</b></span>

\* This Decorative Banding is available with a net-edge. The ordering number for the net-edge has to be stated instead of the Color of Thread.

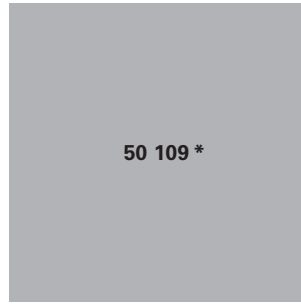
PLASTIC TRIMMINGS · DECORATIVE BANDINGS

50 109

03



R	001	
SS	pp 24 ss 19 2301/2 8x4	
M	10 M	100%



50 109 \*

COLOR OF STONE

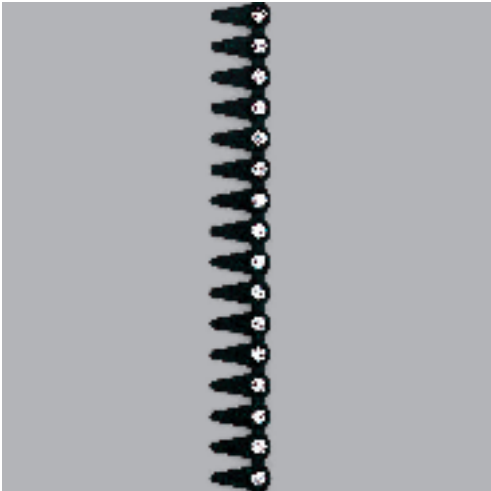
CLASSIC COLORS

Crystal (001)

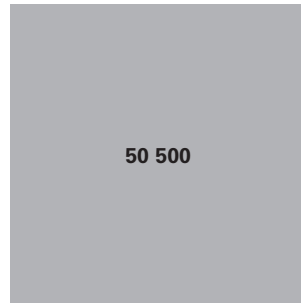
COMBINATIONS OF THREAD / CASING	012 Black / 012 Black
	022 White / 022 White
	022 White / 010 Transparent
	081 Gold / 081 Gold
	082 Silver / 082 Silver
	NET-EDGES
	112 / 212 Black
	122 / 222 White

50 500\*\*

06



R	001	
SS	pp 17	
M	10 M	100%



50 500

COLOR OF STONE

CLASSIC COLORS

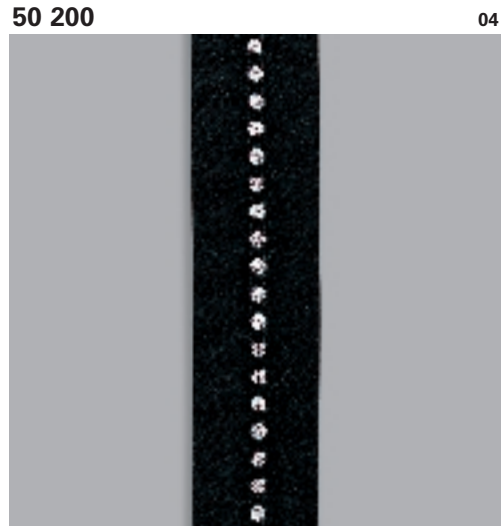
Crystal (001)

COLOR OF CASING	012 black
	022 white

\* This Decorative Banding is available with a net-edge.  
The ordering number for the net-edge has to be stated instead of the Color of Thread.  
\*\* For information on ordering, please see the Ordering Example on page 135.

# PLASTIC TRIMMINGS · SATIN BANDINGS

## ARTICLE EXPLANATION



<b>R</b> 001	
<b>SS</b> pp 18	
<b>M</b> 10 M	<b>100%</b>

50 200	R	SS	M	04	100%
Article Number	Number of Rows This article is <b>available</b> in 1 Row	Size of Stone	Minimum order quantity in Meters (M)	This product is shown on flag number 04	Documentation size in %

## ORDERING EXAMPLE & PRODUCT VARIETY EXPLANATION

50 200	001	012	012	001
Article Number	Number of Rows	Color of Band	Color of Casing	Color of Stone
		<b>012</b> Black <b>022</b> White <b>081</b> Gold <b>082</b> Silver	<b>012</b> Black <b>022</b> White <b>010</b> Transparent	The available stone colors are specified on the following pages.

PLASTIC TRIMMINGS

PLASTIC TRIMMINGS · SATIN BANDINGS

50 200

04



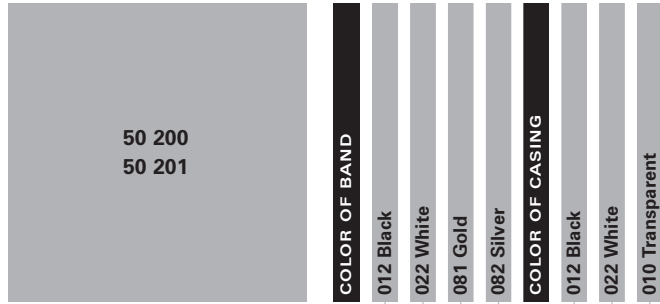
R	001	
SS	pp 18	
M	10 M	100%

50 201

04



R	001	
SS	pp 24	
M	10 M	100%



COLOR OF STONE

CLASSIC COLORS

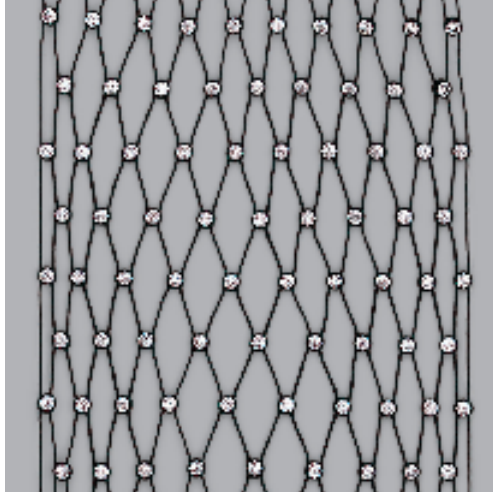
Stone Color	012 Black	022 White	081 Gold	082 Silver	012 Black	022 White	010 Transparent
Crystal (001)	■	■	■	■	■	■	■
Crystal AB (001AB)	■	■	■	■	■	■	■
Jet (280)	■	■	■	■	■	■	■
Aquamarine (202)	■	■	■	■	■	■	■
Black Diamond (215)	■	■	■	■	■	■	■
Emerald (205)	■	■	■	■	■	■	■
Fuchsia (502)	■	■	■	■	■	■	■
Jonquil (213)	■	■	■	■	■	■	■
Light Sapphire (211)	■	■	■	■	■	■	■
Light Siam (227)	■	■	■	■	■	■	■
Peridot (214)	■	■	■	■	■	■	■
Sapphire (206)	■	■	■	■	■	■	■
Topaz (203)	■	■	■	■	■	■	■
Light Multi (908)	■	■	■	■	■	■	■
Rainbow Multi (909)	■	■	■	■	■	■	■

# PLASTIC TRIMMINGS · FISHNET BANDINGS

## ARTICLE EXPLANATION

**50 300**

11



<b>R*</b> 003-055	
<b>SS</b> pp. 19	
<b>M</b> 10 M	<b>90%</b>

50 300	R	SS	M	11	100%
Article Number	Number of Rows This article is available from 3 to 55 rows, in uneven rows: 3, 5, 7, 9, 11...	Size of Stone	Minimum order quantity in Meters (M)	This product is shown on flag number 11	Documentation size in %

## ORDERING EXAMPLE & PRODUCT VARIETY EXPLANATION

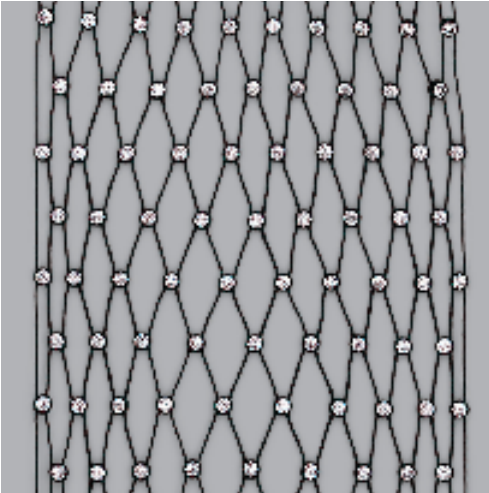
50 300	007	012	012	001
Article Number	Number of Rows	Color of Net	Color of Casing	Color of Stone
		<b>012</b> Black <b>022</b> White	<b>012</b> Black <b>022</b> White <b>010</b> Transparent	The available stone colors are specified on the following pages.

\* This article is only available in uneven rows!

PLASTIC TRIMMINGS · FISHNET BANDINGS

50 300

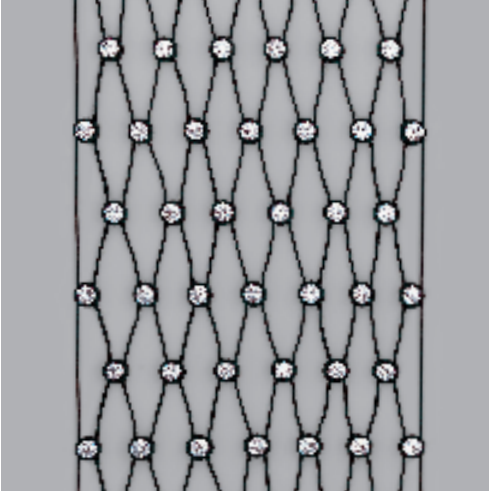
11



<b>R*</b> 003-055	
<b>SS</b> pp 19	
<b>M</b> 10 M	<b>90%</b>

50 301

11



<b>R*</b> 003-047	
<b>SS</b> pp 25	
<b>M</b> 10 M	<b>90%</b>



COLOR OF STONE		COMBINATIONS OF NET / CASING		
CLASSIC COLORS		012 Black / 012 Black	022 White / 022 White	022 White / 010 Transparent
	Crystal (001)	■	■	■
	Crystal AB (001AB)	■	■	■
	Jet (280)	■	■	■
	Aquamarine (202)	■	■	■
	Black Diamond (215)	■	■	■
	Emerald (205)	■	■	■
	Fuchsia (502)	■	■	■
	Jonquill (213)	■	■	■
	Light Sapphire (211)	■	■	■
	Light Siam (227)	■	■	■
	Peridot (214)	■	■	■
	Sapphire (206)	■	■	■
	Topaz (203)	■	■	■
	Light Multi (908)	■	■	■
	Rainbow Multi (909)	■	■	■

\* This article is only available in uneven rows!

# PLASTIC TRIMMINGS · STRETCH BANDINGS

## ARTICLE EXPLANATION

**50 400**

**04**



<b>R</b> 001	
<b>WB</b> 3 cm	
<b>SS</b> pp 27	
<b>M</b> 10 M	<b>100%</b>

PLASTIC TRIMMINGS

50 400	R	WB	SS	M	04	100%
Article Number	Number of Rows This article is available in a fixed number of Rows. The ordering number is <b>always</b> 001!	Width of Band in cm	Size of Stone	Minimum order quantity in Meters (M)	This product is shown on flag number 04	Documentation size in %

## ORDERING EXAMPLE & PRODUCT VARIETY EXPLANATION

50 400	001	012	012	001
Article Number	Number of Rows	Color of Band	Color of Casing	Color of Stone
		<b>012</b> Black <b>022</b> White <b>081</b> Gold <b>082</b> Silver	<b>012</b> Black <b>022</b> White <b>010</b> Transparent	The available stone colors are specified on the following pages.

# PLASTIC TRIMMINGS · STRETCH BANDINGS

50 400

04



R	001	
WB	3 cm	
SS	pp 27	
M	10 M	100%

50 401

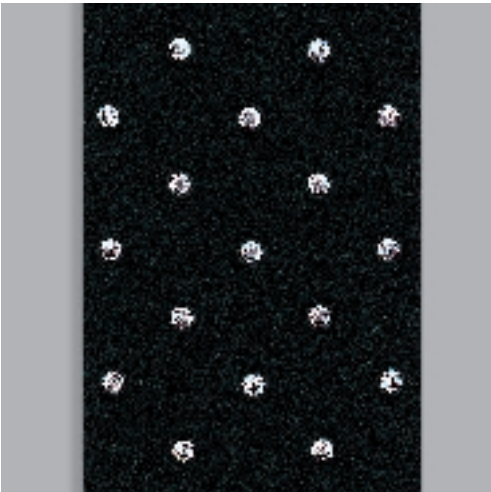
04



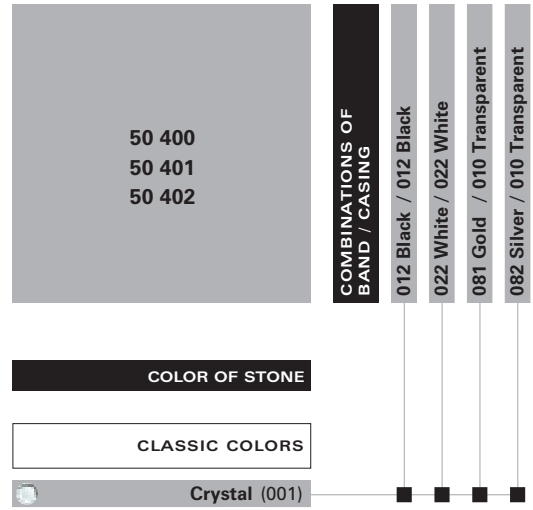
R	001	
WB	3 cm	
SS	pp 27	
M	10 M	100%

50 402

04



R	001	
WB	5 cm	
SS	pp 27	
M	10 M	100%



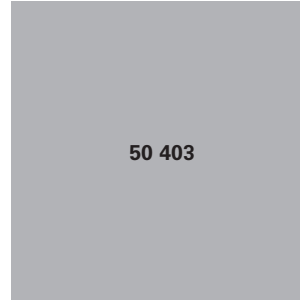
PLASTIC TRIMMINGS

PLASTIC TRIMMINGS · STRETCH BANDINGS

50 403 04



<b>R</b>	001	
<b>WB</b>	5 cm	
<b>SS</b>	pp 27	
<b>M</b>	10 M	100%



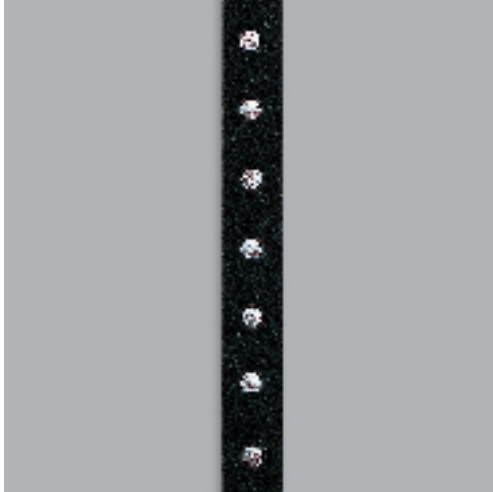
COLOR OF STONE

CLASSIC COLORS

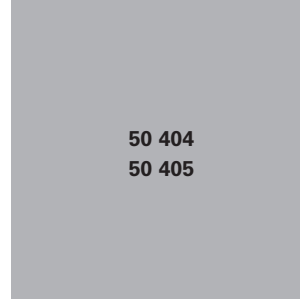
Crystal (001)

COMBINATIONS OF BAND / CASING	012 Black / 012 Black
	022 White / 022 White
	081 Gold / 010 Transparent
	082 Silver / 010 Transparent

50 404 04



<b>R</b>	001	
<b>WB</b>	0,8 cm	
<b>SS</b>	pp 25	
<b>M</b>	10 M	100%



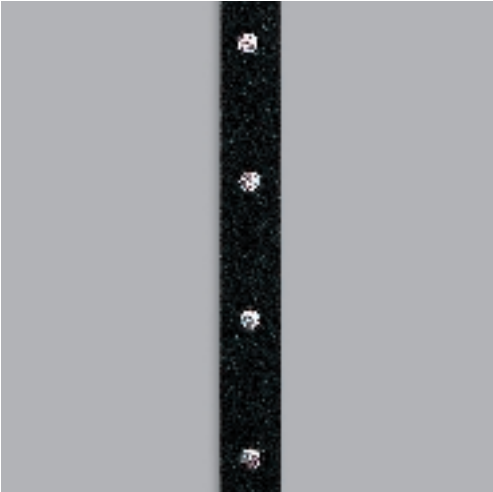
COLOR OF STONE

CLASSIC COLORS

Crystal (001)

COMBINATIONS OF BAND / CASING	012 Black / 012 Black
	022 White / 022 White

50 405 04



<b>R</b>	001	
<b>WB</b>	0,8 cm	
<b>SS</b>	pp 25	
<b>M</b>	10 M	100%

PLASTIC TRIMMINGS